

MAX PV SPD replace instruction

NO.1 Damaged description

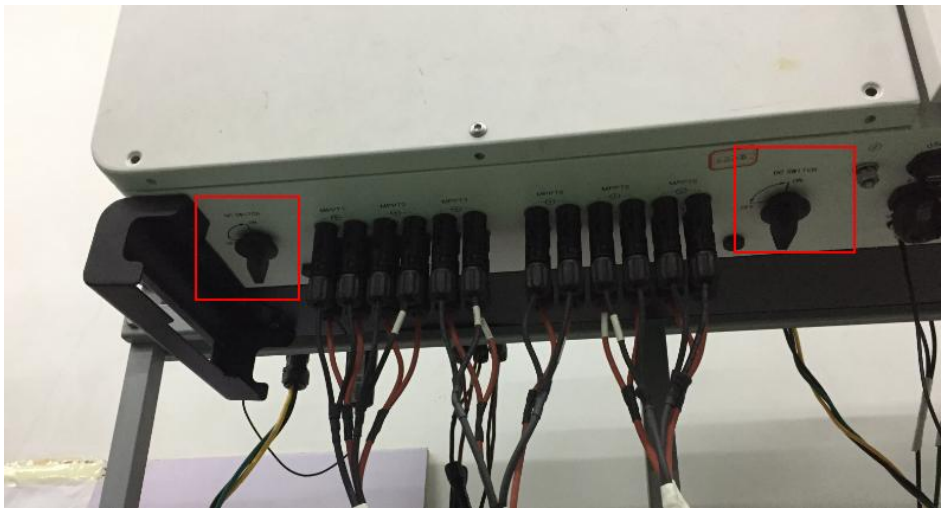
①the monitor system will report warning 106, it means MAX SPD abnormal.

②Check inside, measure the SPD to confirm the SPD state.

Here are two solutions,one of it is that check the symbol on the SPD likes below pictures show ; another one is that measure the Ω value of **the SPD**.

No.2 Steps of replacement

1.Turn off (turn off all PV and AC breaker)

| | |
|-----------|--|
| AC switch | Max don't have AC switch inside, You could cut off the AC connection through your own breaker. |
| PV switch |  |

2. Open the lid

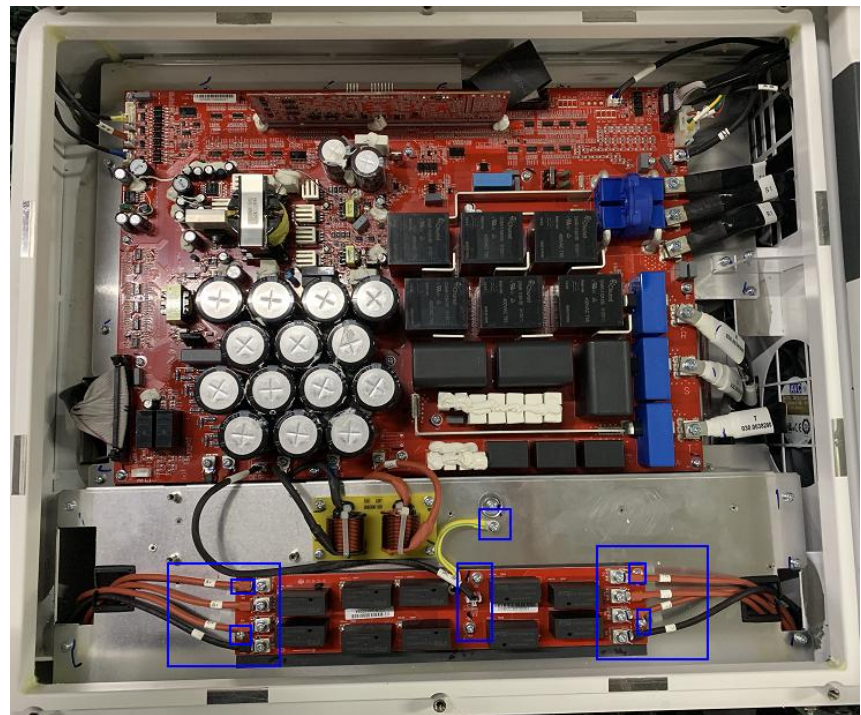
Remove 6 screws of the lid

Unplug all 12 Strings

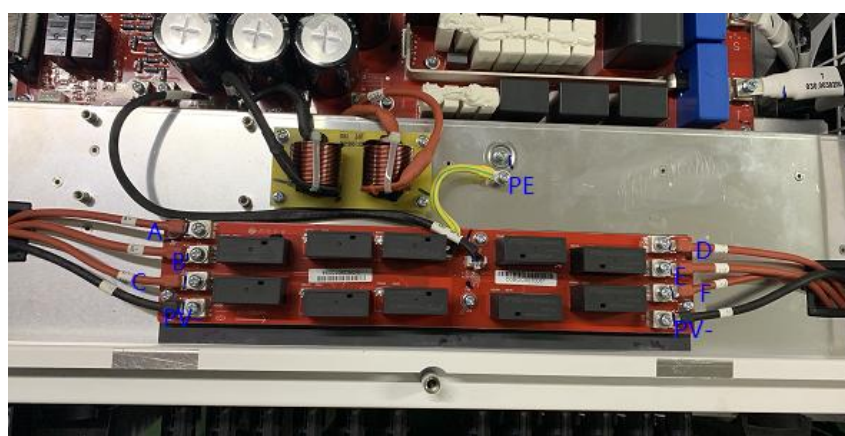


3. PV SPD mount and unmount

Remove all screws as the blue square show. Then replace the SPD board.



Install new board,
Fasten all screws one
by one. Make sure
all cables match to
the port correctly
You should confirm
the connection by
the symbol on cables
and board. After that
,pleasetake a picture
as a record.



If PV SPD damaged
The SPD mark will
change to red.
The mark as the Blue
square shows.



No.3 Confirm connection

- ①check the cable connection, make sure it is fasten and connect to the right port.
- ②check the screws,make sure screws be fasten firmly.
- ③after replacement,connect back strings,make sure those connected well.

No.4 running test

- ①Turn on PV switch, measure and confirm the PV and Bus voltage. confirm the firmware version.
- ②Turn on AC, compare the AC voltage which measured by MAX and the voltage measured by your multi-meter. Make sure Max AC sampling circuit is work normal.
- ③ When MAX running , confirm the paratmeters such as PV voltage/current,AC voltage/current,Bus voltage,Output power rate and so on. Keep them during the right range.
- ④If every thing is ok, the test finished. Then you should return the Lid after turn off AC and PV. Fasten all screws of the lid make sure the Lid install well and have a standard Ingress Protection Levels.