

ARK 2.5L-A1 电池拆机指引

ARK 2.5L-A1 battery disassembly guide

目录

一. 拆机警告/Disassembly warning:	2
二. 注意安全事项/Pay attention to safety matters:	2
三. 拆机工具/Disassemble tool:.....	2
四. 拆机步骤/Disassembly steps:.....	3
五. 模组充电步骤/Module charging steps:	5
六. 装机步骤/Installation steps:.....	6

一. 拆机警告/Disassembly warning:

- 1、非必要情况下请勿私自拆机。
1. Please don't disassemble the machine privately unless necessary.
- 2、电池属于危险品，非专业人员禁止拆机。
2.The battery is dangerous, non-professionals are forbidden to disassemble it.

二. 注意安全事项/Pay attention to safety matters:

- 1、模组安装在电池内部，模组电压：0-60Vdc，拆机和装机时请佩戴绝缘手套。
1.The module is installed inside the battery, the module voltage: 0-60Vdc, please wear insulating gloves when disassembling and installing.
- 2、拆机前请摘下手上的金属类物品（如手表、戒指等）。
2.Please take off the metal objects (such as watches, rings, etc.) on your hands before disassembling the battery.
- 3、电池拆机请严格按照拆机步骤执行。
3. Please strictly follow the steps to disassemble the battery.

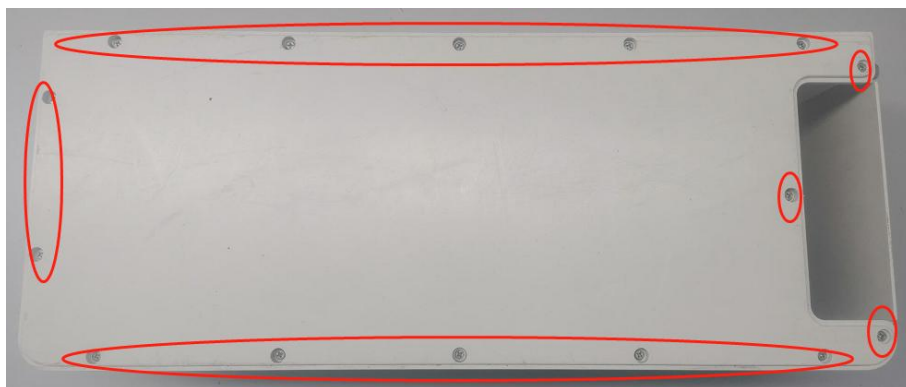
三. 拆机工具/Disassemble tool:

- 1、二氧化碳灭火器。
1. Carbon dioxide fire extinguisher.
- 2、十字螺丝刀或者电动螺丝刀。
2. Phillips screwdriver or electric screwdriver.
- 3、绝缘手套。
3. Insulated gloves.
- 4、绝缘胶带。
4. Insulation Tape.

四. 拆机步骤/Disassembly steps:

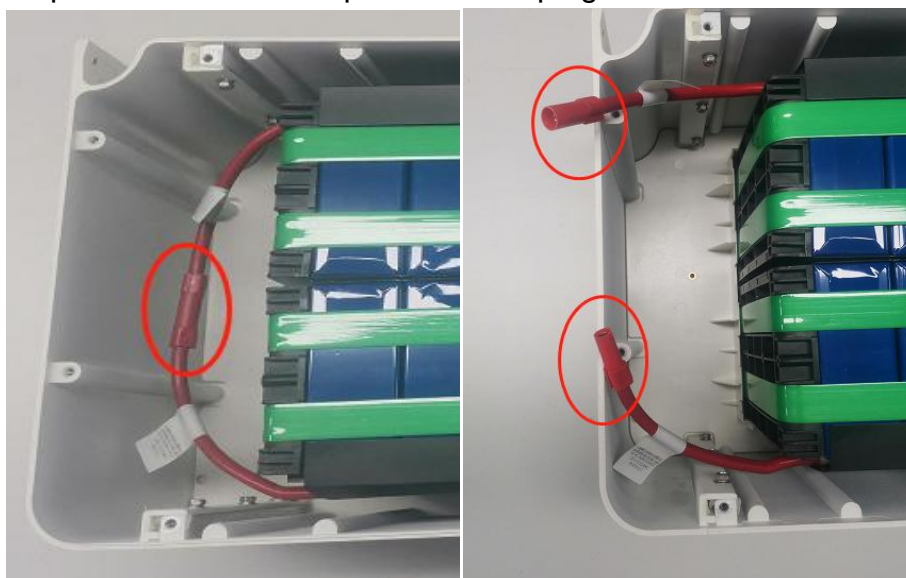
第一步：撕下防拆标签，拆下底盖螺丝（15pcs），卸下电池底盖。

Step 1: Remove the tamper-evident label, remove the bottom cover screws (15pcs), and remove the battery bottom cover.



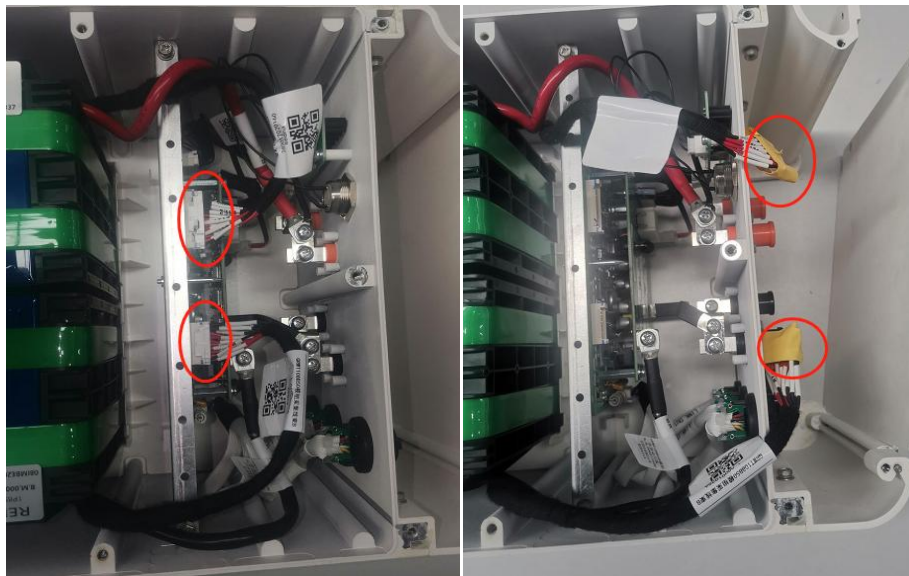
第二步：断开模组尾部快接插头。

Step 2: Disconnect the quick connect plug at the end of the module.



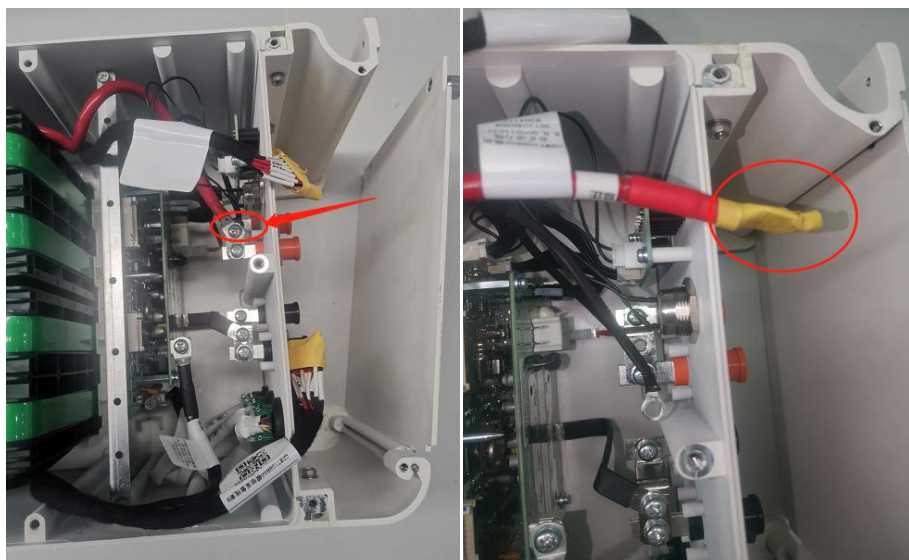
第三步：按下采样线端子卡扣，拆下电池模组采样线。使用绝缘胶带缠绕采样线端子，防止模组采样线发生短路危险。

Step 3: Press the terminal buckle of the sampling line and remove the sampling line of the battery module. Use insulating tape to wrap the terminal of the sampling line to prevent it from being short-circuited.



第四步：拆下 BMS 正极供电线，使用绝缘胶带缠绕模组正极金属端子，防止模组正极与模组负极、BMS、框体误接触，发生危险。

Step 4: Remove the positive power supply line of the BMS, and wrap the positive metal terminal of the module with insulating tape. Prevent accidental contact between the positive pole of the module and the negative pole of the module, BMS and the frame, which may cause danger.



五. 模组充电步骤/Module charging steps:

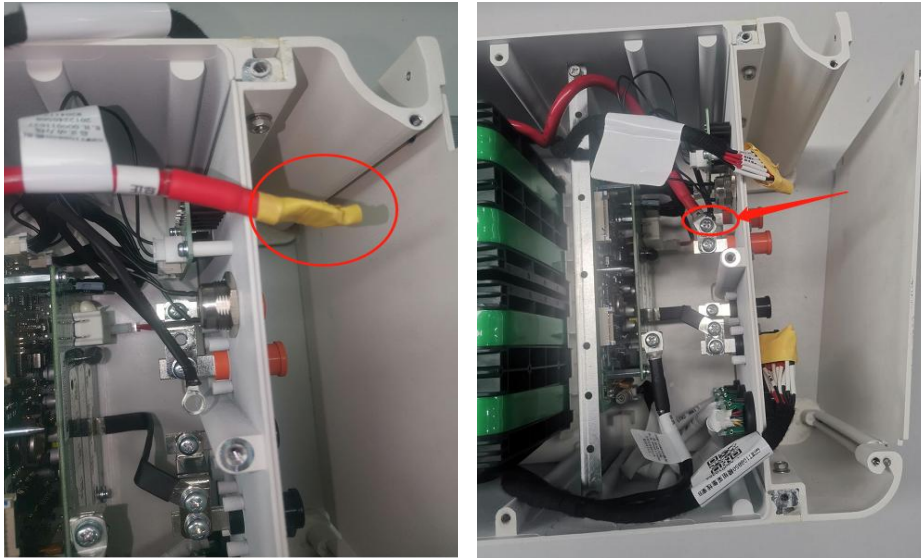
- 1、模组的正极接到可调直流电源正极，模组的负极接到可调直流电源负极。
1. The positive pole of the module is connected to the positive pole of the adjustable DC power supply. The negative pole of the module is connected to the negative pole of the adjustable DC power supply.
- 2、插上模组尾部快接插头。
2. Insert the quick connect plug at the end of the module.
- 3、设置可调直流电源恒流模式 51.2V/1A 给电池充电，直到电池电压达到 50V，停止充电。
3. Set the adjustable DC power supply constant current mode 51.2V/1A to charge the battery until the battery voltage reaches 50V, stop charging.
- 4、停止充电后，模组静置 1 小时。
4. After stopping charging, let the module stand for 1 hour.
- 5、使用万用表直流电压档测量电池电压，电池内部测量电压点如下图。测量时注意万用表表笔不要与电池其他金属部分接触。
模组电压测量点：Module +/ Module -。正常模组电压范围 49-50V。
5. Use a multimeter to measure the battery voltage in the DC voltage range. The internal voltage points of the battery are as shown in the figure below. When measuring, make sure that the test pen of the multimeter is not in contact with other metal parts of the battery.
Module voltage measurement point: Module +/ Module -. The normal module voltage range is 49-50V.



六. 装机步骤/Installation steps:

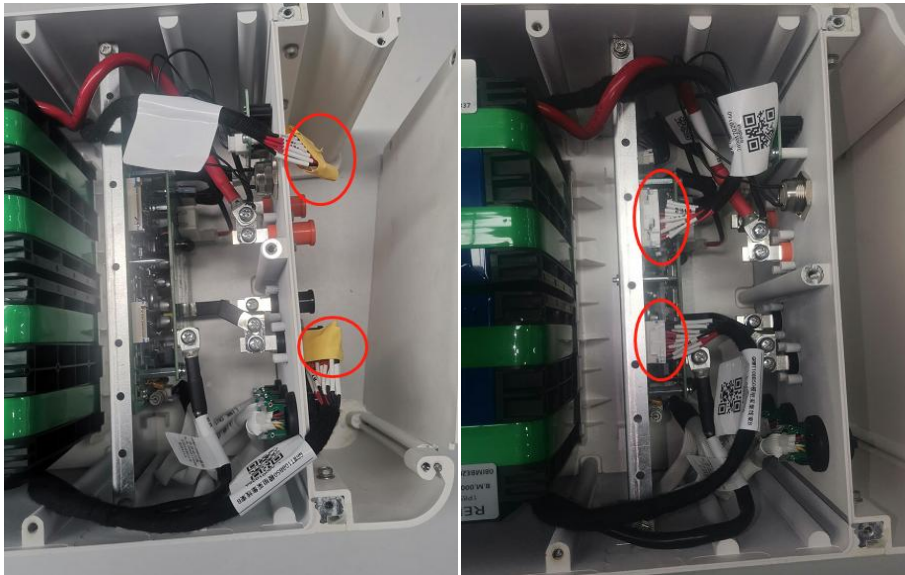
第一步：安装电池模组正极功率线和 BMS 正极供电线，扭力 1.5 N·M。

Step 1: Install the positive power line of the battery module and the positive power supply line of the BMS, with a torque of 1.5 N·M.



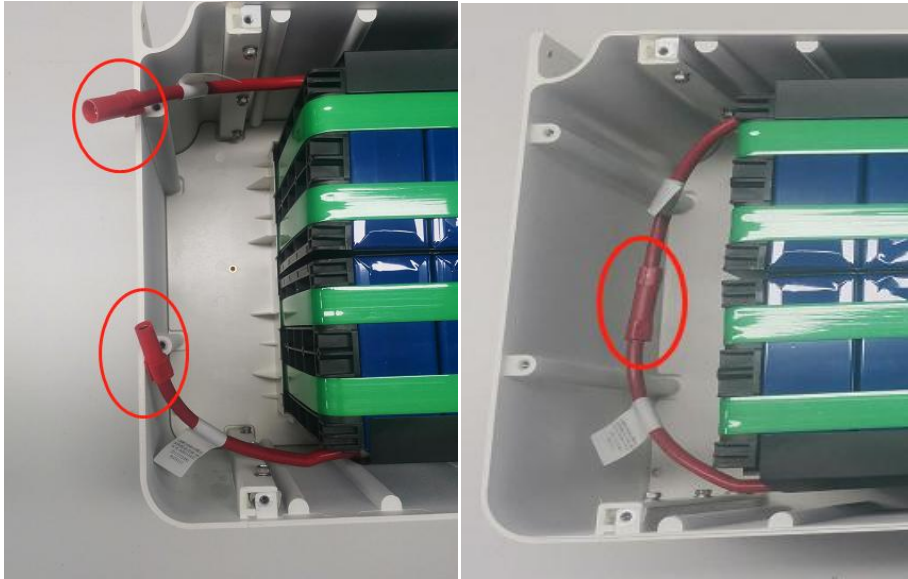
第二步：插上电池模组采样线，注意不要插错模组采样线。

Step 2: Plug in the sampling line of the battery module, taking care not to insert the wrong sampling line of the module.



第三步：连接好电池尾部快接插头。

Step 3: Connect the quick connect plug at the end of the battery.



第四步：合上底盖并锁紧底盖螺丝（15pcs），扭力 1.4 N·M。

Step 4: Close the bottom cover and tighten the bottom cover screws (15pcs), torque 1.4 N·M.

