

## Growatt installer OSS account registration guide



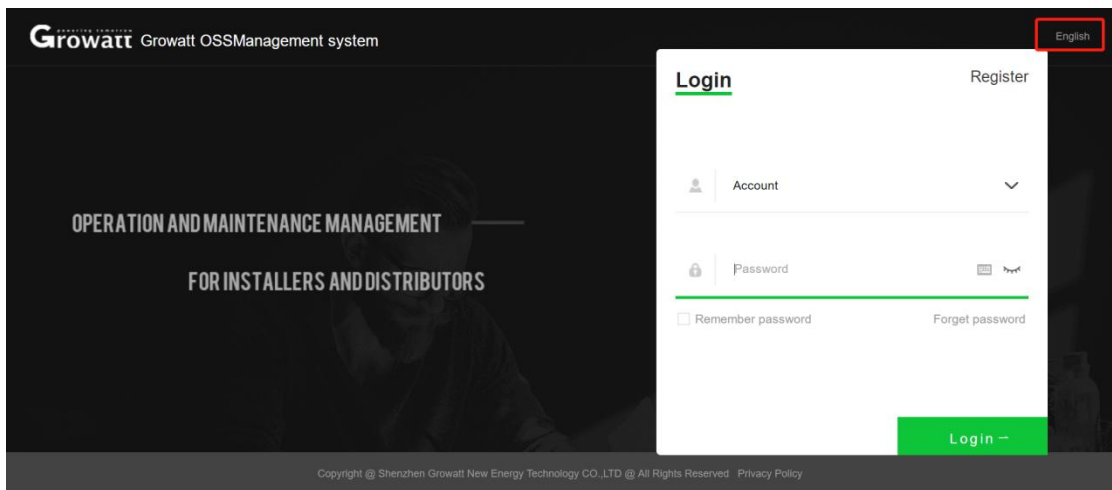
### Table of Contents

- 1、 How to register an installer OSS account;
- 2、 How to creat a monitoring account for end customer
  - 2.1、 Create a monitoring account for the end customer via the installer OSS account ;
  - 2.2、 Create a monitoring accounts for end customer via shineserver website or shinephone APP.

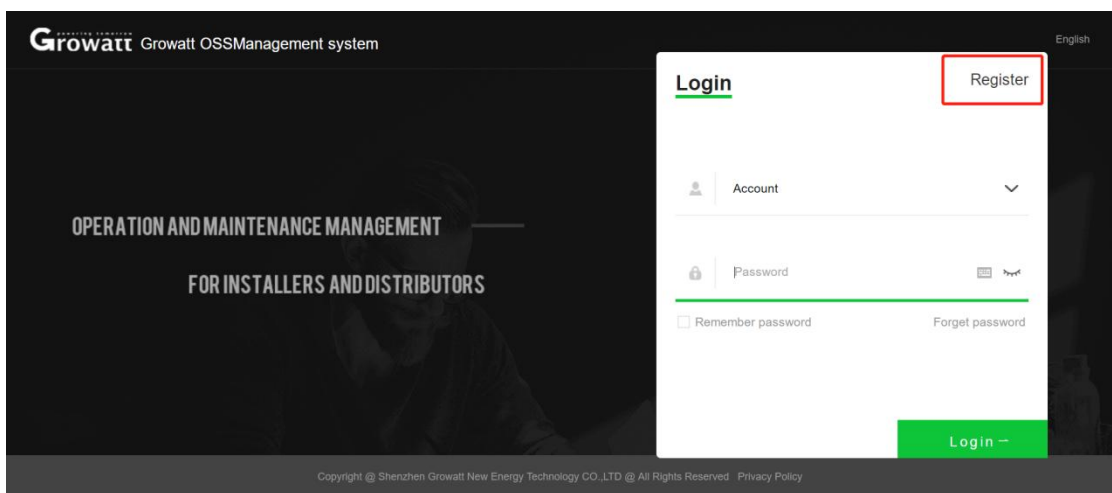
## 1、 How to register an installer OSS account;

1.1、 Login into the OSS homepage and select English;

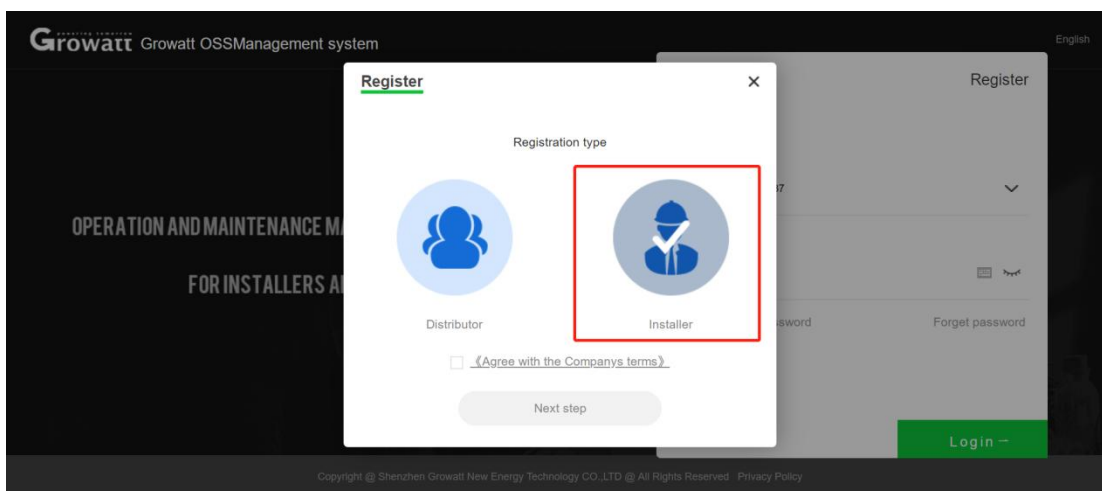
<http://oss.growatt.com/login?lang=en>;



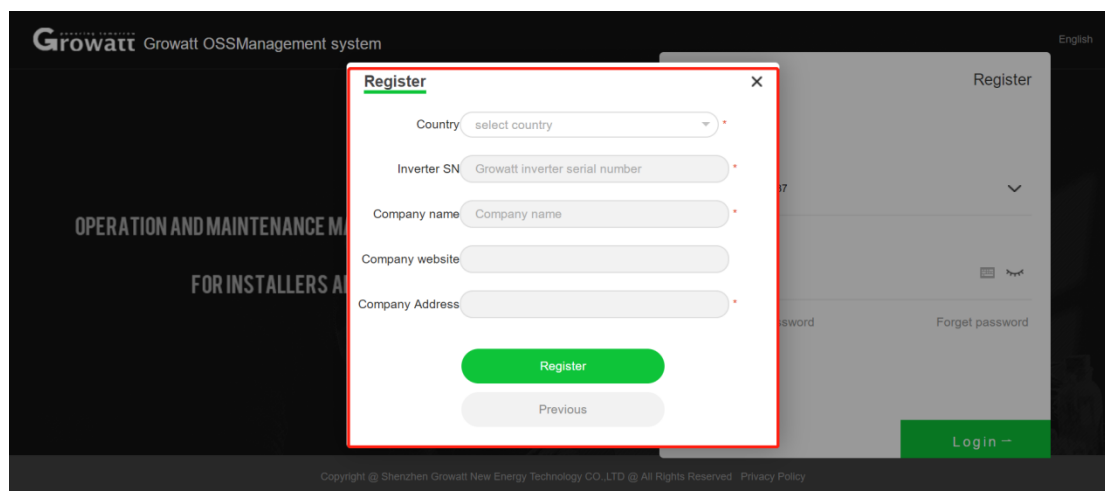
1.2、 Click on the register button ;



1.3、 Select the type of installer, tick the terms of the agreement with the user of the company, and then click the next step button;



1.4、 Complete the information in the dialog box as prompted, and click the register button after completing the information in the dialog box;



Country: The country where your office is located;

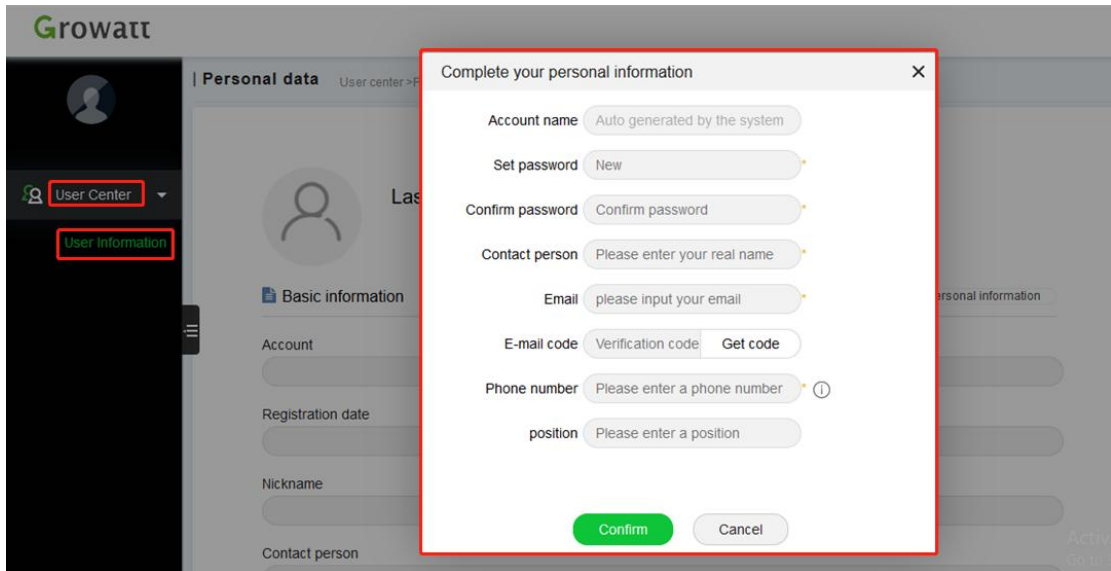
Inverter SN: one inverter SN of installed inverters;

Company Name: Your real company name ;

Company Website: Your company website (this item is optional);

Company Address: Your company address;

1.5、 Fill in the information in the dialog box according to the prompts, and then click the "Confirm" button after completing the personal information;



Account Name:Account name (generated automatically by the system) ;

Set Password:set password (at least 6 digits) ;

Confirm Password:type password again ;

Contact Person:Plant owner ;

Email:Email address ;

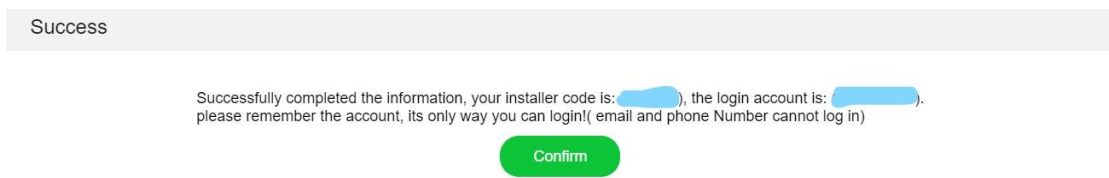
Email Code:If you enter email and click “Sent” , you will receive a code (Keep your account secure. Please verify it within 10 minutes) ;

Hello! You are currently requesting email verification. Please enter this code in the verification box: [redacted] to complete the verification.  
(In order to protect your account security, please complete the verification within 10 minutes)

Phone number : Your phone numbe ;

Position : Title of position ;

1.6、 Click “Confirm“ to get your installer OSS account



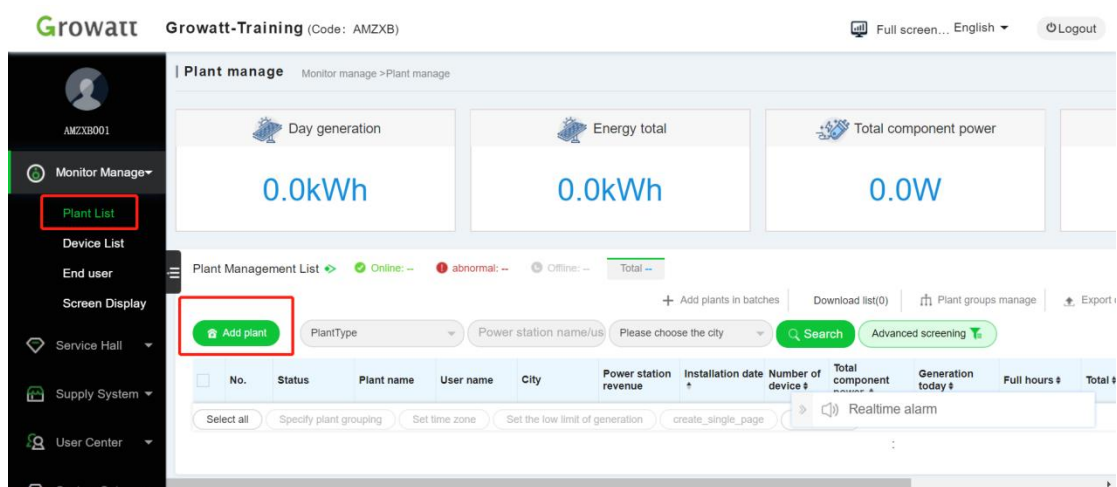
## 2、 How to use the installer account;

2.1、 Create a monitoring account for end customer via installer OSS account ;

2.1.1、 Plant List ---- Plant List;

Here you can make a monitoring account for end customer by plants ;

2.1.2、 Click on “Add plant”;



2.1.3、 Enter the user information. Please choose “Growatt Server ” for the server ;

Add plant
✕

New user
Existing user? [Skip](#)
Add plant
Add datalogger

1

Existing user? [Skip](#)

2

3

\*Server:

\*Country:

\*Account name:

\*Set password:

\*Confirm password:

\*Time zone:

Company name:

Save
Cancel

2.1.4. Search for power stations. Enter the inverter serial number in advanced filtering. Find the corresponding power station, you can Manage it;

**Growatt** Growatt-Training (Code: AMZXB)
Full screen... English

AMZXB001

0.0kWh

0.0W

0¥

abnormal: 0 Offline: 3 Total: 3
+ Add plants in batches
Download list(0)
Plant groups manage
Export data
Parameter display (9/16)

Search
Advanced screening

User name	City	Power station revenue	Installation date	Number of device	Total component power	Generation today	Full hours	Total	Operating tools
tsrtg123	Shenzhen	0	2020-02-21	0	1000W	0kWh	0	0kWh	<div style="display: flex; justify-content: space-around; font-size: 0.8em;"> <span>✎</span> <span>✎</span> <span>✎</span> <span style="border: 2px solid red; padding: 2px;">👁</span> </div>

Click on

👁

2.1.5. Device List----Inverter SN List you have installed

Here you can add new installed inverter to a specific shinesserver user account ;

GROWATT NEW ENERGY TECHNOLOGY CO.,LTD  
 Building B, Jiayu Industrial Zone, #28 Guanghui Road,  
 Longteng Community, Shiyan, Baoan District,  
 Shenzhen, P.R. China

T + 86 755 2747 5888  
 T + 86 755 2747 1942  
 P.C. 518000

E service@ginverter.com  
 W www.growatt.com  
 W www.ginverter.com

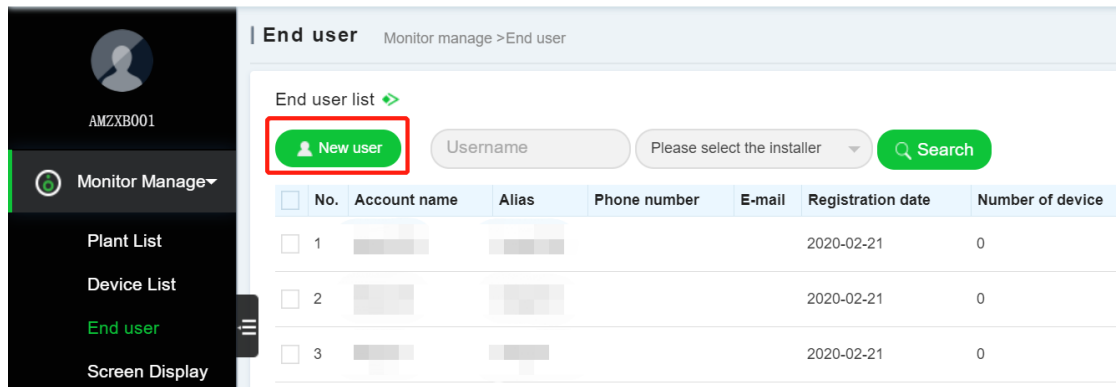
The screenshot shows the 'Device list' page in the Growatt monitoring system. On the left is a navigation menu with options like 'Monitor Manage', 'Plant List', 'Device List', 'End user', 'Screen Display', 'Service Hall', and 'Supply System'. The main content area is titled 'Device list' and includes a sub-header 'Monitor manage > Device list'. Below this are tabs for 'Inverter', 'Storage inverter', 'Hybrid inverter', and 'SPA'. A large gauge shows the 'Operating state' at 0%, with 'Current power' and 'Total power' both at 0.00KW. To the right, a 'generation and revenue' chart shows 'When DayEnergy total 0kWh'. At the bottom, there's a summary for 'Inverter list' with status indicators for abnormal quantity, offline inverters, waiting inverters, and online inverters. A red box highlights the 'Add device' button. Below the button are input fields for 'Serial number', 'City', and 'User/Plant', and a table with columns: No., Device SN, Model, Plant, User name, City, Datalogger, and Last update.

The 'Add device' modal form contains the following fields and elements:

- \*Assigned user: Input and select user
- \*Assigned plant: Input and select plant
- \*Datalogger SN: |
- \*Check code:
- Third party device
- Save button
- Cancel button

2.1.6、 End User---- end customer monitoring user list

End users can be added here ;

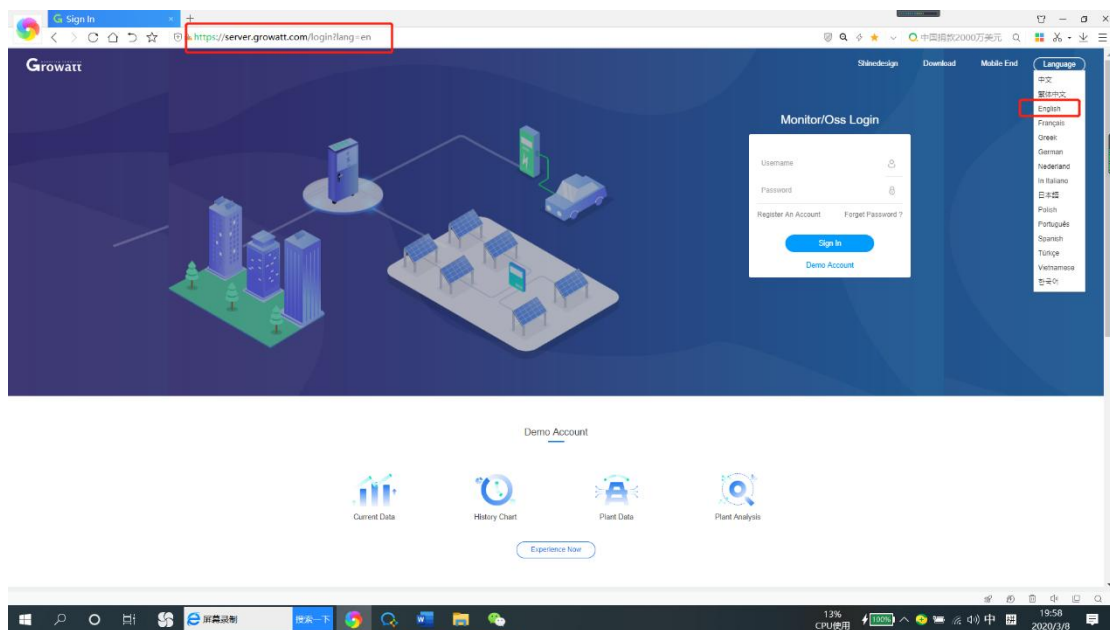


**NOTE:** If you sign in to the installer OSS account and create a monitoring account for endcustomer here, the end customer monitoring account will automatically link to your installer account. In this case, you do not have to enter the installer code;

2.2. Create a monitoring accounts for end customer via shinesserver website or shinephone APP.

2.2.1. Login into shinesserver homepage, and Language set in English;

<https://server.growatt.com/login?lang=en>;





2.2.2、 Click the account registration button ;



2.2.3、 Follow the prompts to fill in the information in the dialog box. After completing the information in the dialog box, click the “Next” button;

The image shows a registration form with three tabs: 'User', 'Installer', and 'Distributor'. The 'User' tab is selected. The form contains the following fields:

- Country: Dropdown menu with a red dot indicating a required field.
- Username: Text input with a red dot and the constraint 'No More Than 30 Characters'.
- Password: Text input with a red dot and the constraint 'Not Less Than 6 Digits'.
- Password Confirm: Text input with a red dot and the constraint 'Not Less Than 6 Digits'.
- Language: Dropdown menu with 'English' selected and a red dot.
- Phone Number: Text input.
- E-Mail: Text input with a red dot.
- Installer Code: Text input, highlighted with a red rectangular box.

A red text overlay reads: **please enter the installer code**. Below the fields is a checked checkbox labeled 'Agree With The Company'S Terms' and a blue 'Next' button.

2.2.4. When the end customer registers a monitoring account, the installer code is required. Please fill in this code ;

**Growatt** **Growatt-Training** (Code: )

your installer code

**Device list** Monitor manage > Device list

Inverter Storage inverter Hybrid inverter SPA

Operating state

0 %

Operating state

Current power 0.00KW Total power 0.00KW

generation ε

When DayEnd

1 3 5

Inverter list > Abnormal quantity: 0 Offline inverter: 0 Waiting inverter: 0

Add device Serial number City User/Pla

No.	Device SN	Model	Plant	User name	City	Datalogger
<input type="button" value="Select all"/> <input type="button" value="Delete"/> <input type="button" value="Export data ^"/>						

**NOTE:** If creating a monitoring account for end customer through the ShinePhone APP or server.growatt.com, you must enter the installer code, Otherwise, the monitoring account cannot be registered successfully ;